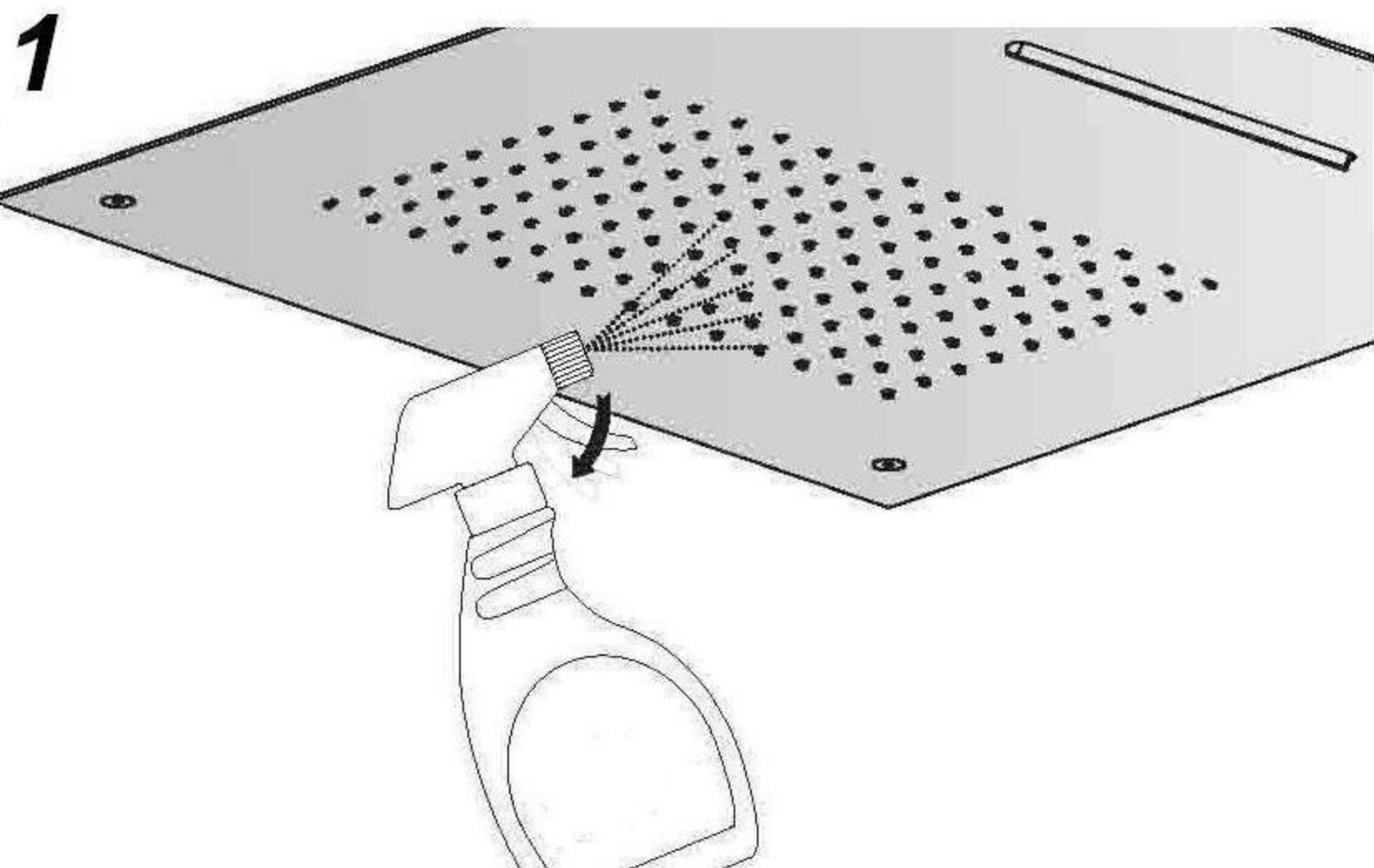
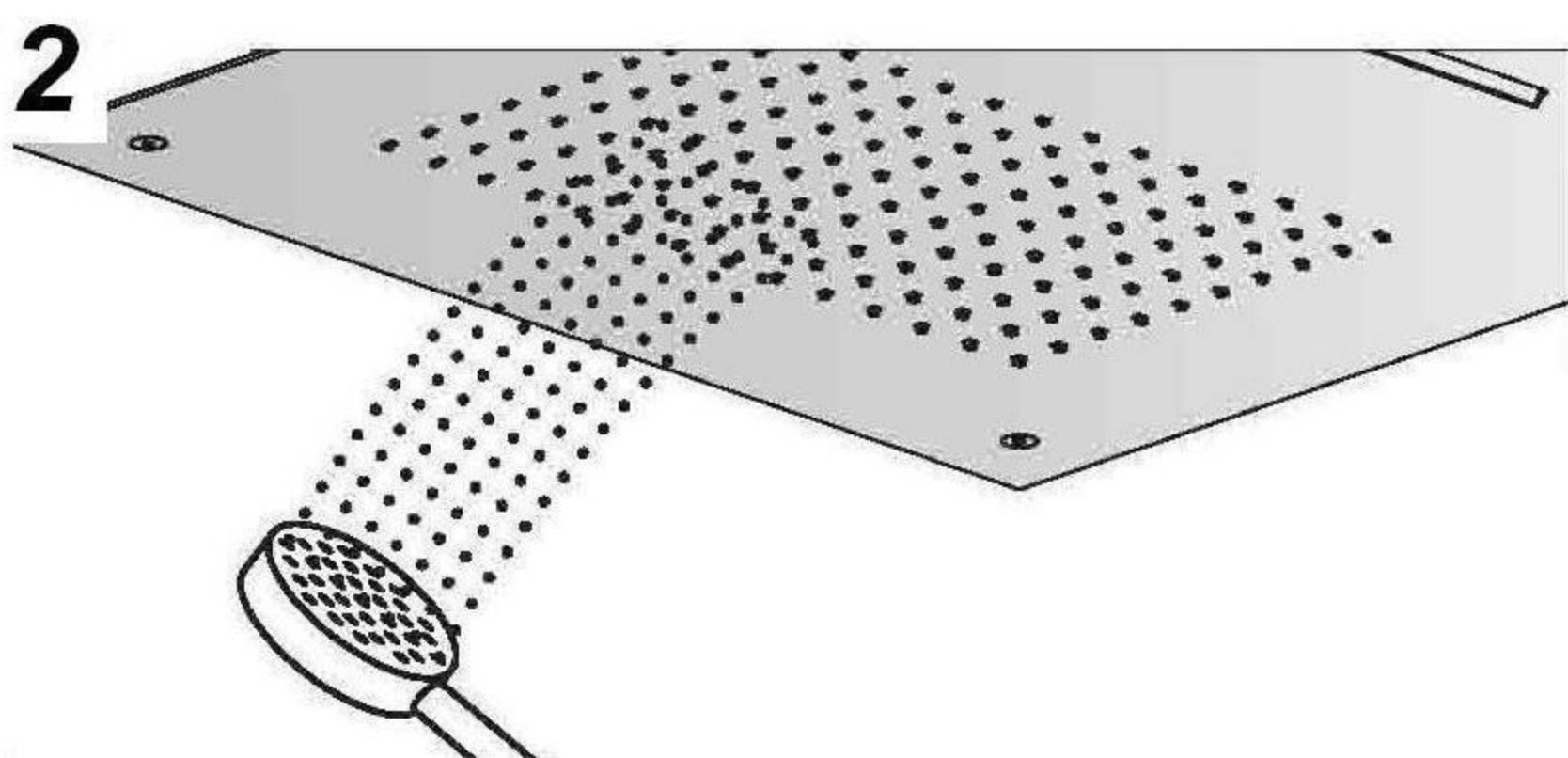


**CONSIGLI PER UNA CORRETTA PULIZIA E MANUTENZIONE
ADVICES FOR A CORRECT CLEANING AND MAINTENANCE**



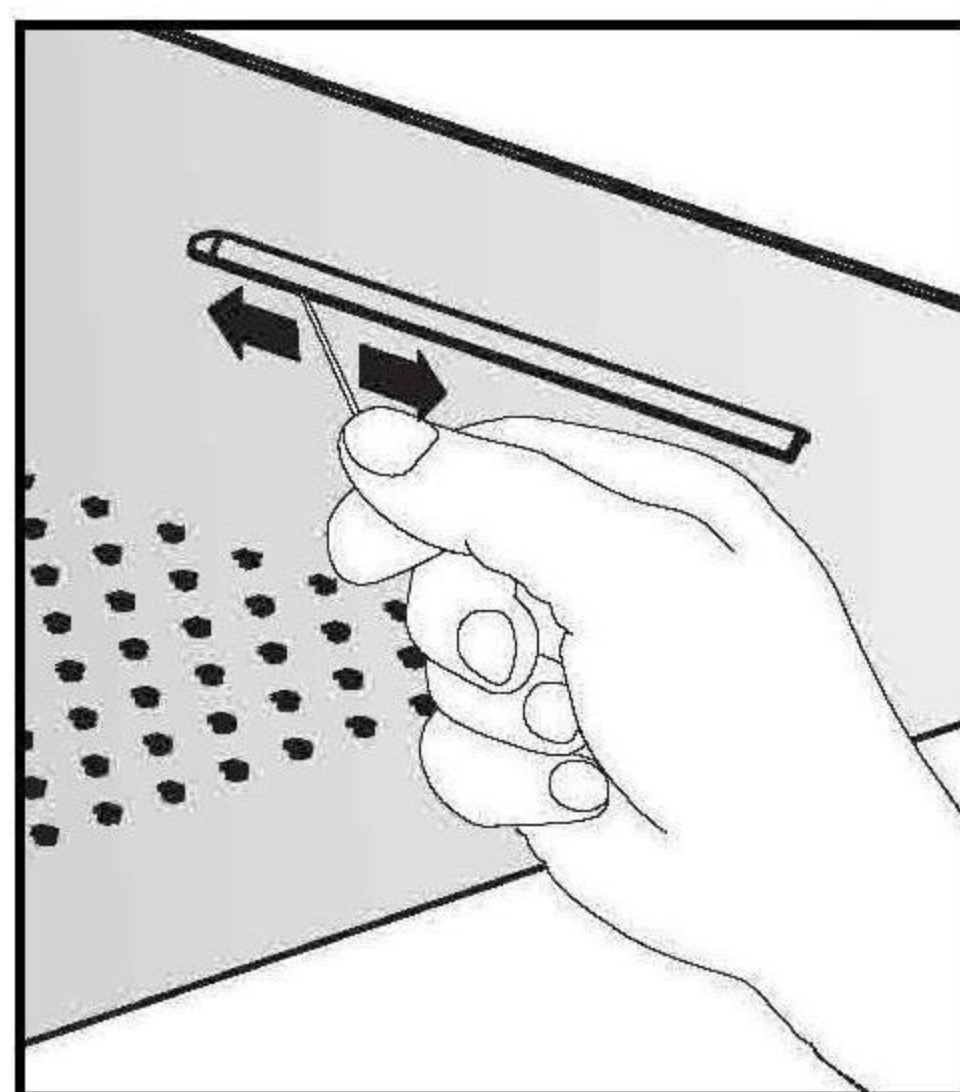
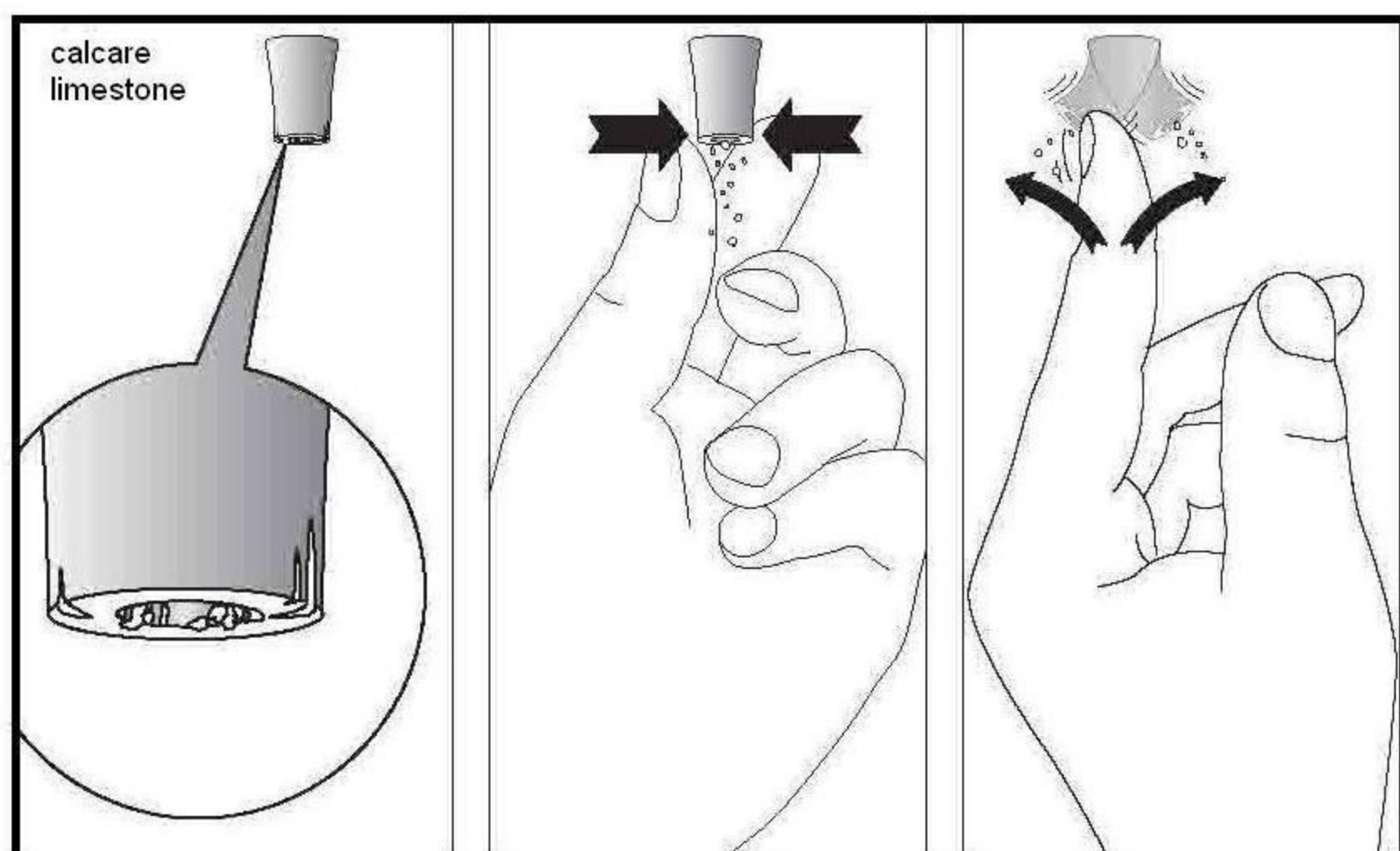
**UTILIZZARE SOLO PRODOTTI DI PULIZIA
NEUTRI, NON ACIDI**

**USE ONLY NEUTRAL CLEANING PRODUCTS,
NOT ACID**



RISCIACQUARE SEMPRE CON ACQUA

ALWAYS RINSE WITH WATER



**ATTENZIONE TENERE PULITI I GETTI PER EVITARE SOVRAPRESSIONI INTERNE , CHE POSSONO
DANNEGGIARE IL SOFFIONE .**

**WARNING CLEAN THE JETS TO AVOID INNER OVERPRESSURE THAT CAN DAMAGE THE SHOWER
HEAD**